

Have you ever wondered...
Taking Part survey briefing No. 10
September 2009



Arts engagement in England from 2005/06 to 2007/08

Findings from the first three years of the Taking Part survey

Anni Oskala and Catherine Bunting
September 2009

1 Introduction

Arts Council England is committed to getting great art to everyone by championing, developing and investing in artistic experiences that enrich people's lives. Having a strong evidence base on the current patterns of engagement and non-engagement in the arts is crucial to our work to achieve this ambition.

In recent years, we have gained a lot of information about arts engagement patterns from 'Taking Part', a large-scale survey of cultural participation among English adults. Taking Part has been running since 2005 and we now have several full years of data available for analysis. The survey data are rich and robust, and offer enormous potential for exploring how English adults engage in the arts, and whether there have been any changes over the past few years.

To date we have conducted extensive analysis of the first full year of data from 2005/06, including *From indifference to enthusiasm*, an in-depth report on the demographic factors that affect arts engagement, and *Arts audiences: Insight*, a detailed segmentation of types of arts engagers among the English adult population¹.

This report is our first step in exploring the wealth of data on year-on-year changes in arts engagement since 2005/06. It looks at trends in comparable figures over the three-year period from 2005/06 to 2007/08. These data help us understand

¹ *From indifference to enthusiasm: patterns of arts attendance in England* by Catherine Bunting, Tak Wing Chan, John Goldthorpe, Emily Keaney and Anni Oskala (Arts Council England, 2008), available at www.artscouncil.org.uk/takingpart. *Arts audiences: insight* (Arts Council England, 2008), available at www.artscouncil.org.uk/audienceinsight.

whether the overall level of engagement with the arts in England has gone up or down, or stayed the same; whether audiences for particular artforms are increasing or decreasing; and whether the demographic profile of arts engagers has changed. This information enables the Arts Council, arts organisations, central and local government and others working in the arts to assess progress towards a shared ambition to enable more people in England to experience the best of the arts, and to gain a better understanding of what might be achieved over what time period.

2 Methodology

2.1 About the Taking Part survey

Taking Part is a continuous survey of adults in England that has been running since 2005. It is commissioned by the Department for Culture, Media and Sport (DCMS) in partnership with Arts Council England, Sport England, English Heritage and the Museums, Libraries and Archives Council. Every year it collects information from thousands of English adults (aged 16 and over) in face-to-face interviews.

Respondents are asked about their engagement in culture, leisure and sport in the 12 months prior to interview. The questions cover their attendance at a wide variety of arts events, museums, galleries, libraries and heritage sites, and about their participation in creative activities and sport. The survey also asks about motivations and barriers to cultural attendance and participation, and collects a large quantity of socio-demographic information such as each respondent's age, occupation, income, health and ethnicity. The survey fieldwork is conducted by BMRB Social Research to high industry standards.

For the three years covered by this report – 2005/06 to 2007/08 – the survey had a very large annual sample of over 25,000 people. The estimates in this report are therefore statistically very robust. All percentages are weighted to be representative of the English adult population.

2.2 Understanding the figures in this report

All charts and tables in the report present estimates along with a range which indicates the statistical margin of error for each estimate (also known as the 95% confidence interval). We can be 95 per cent confident that the true percentage among the whole population falls within this range, assuming no bias in the sample. Each percentage estimate cited is the midpoint along the range. The

actual figure in the population is most likely to be around the middle of the range, but it could be at either end.

When making comparisons, we indicate whether a difference between any two figures is 'statistically significant'. Only statistically significant differences between estimates can be taken as an indication of actual difference among the population. We have run our statistical tests at the 95% confidence level, which means that the probability of any observed significant changes having happened by chance is low (one in 20). Please note that particularly when working with a large and statistically powerful dataset, a difference can be statistically significant without being very large in actual magnitude or significant in any practical or policy terms.

For ease of reference, all figures discussed in the main body of the report are also provided in summary tables in Appendix 1. Statistically significant year-on-year increases and decreases are indicated with plus and minus signs in the tables. The tables also show the annual sample sizes of the Taking Part survey. The sample sizes of the different demographic groups over the three years of the survey are presented in Appendix 2.

3 Trends in arts engagement 2005/06–2007/08

This section considers whether and how arts engagement in England changed over the three years from 2005/06 to 2007/08².

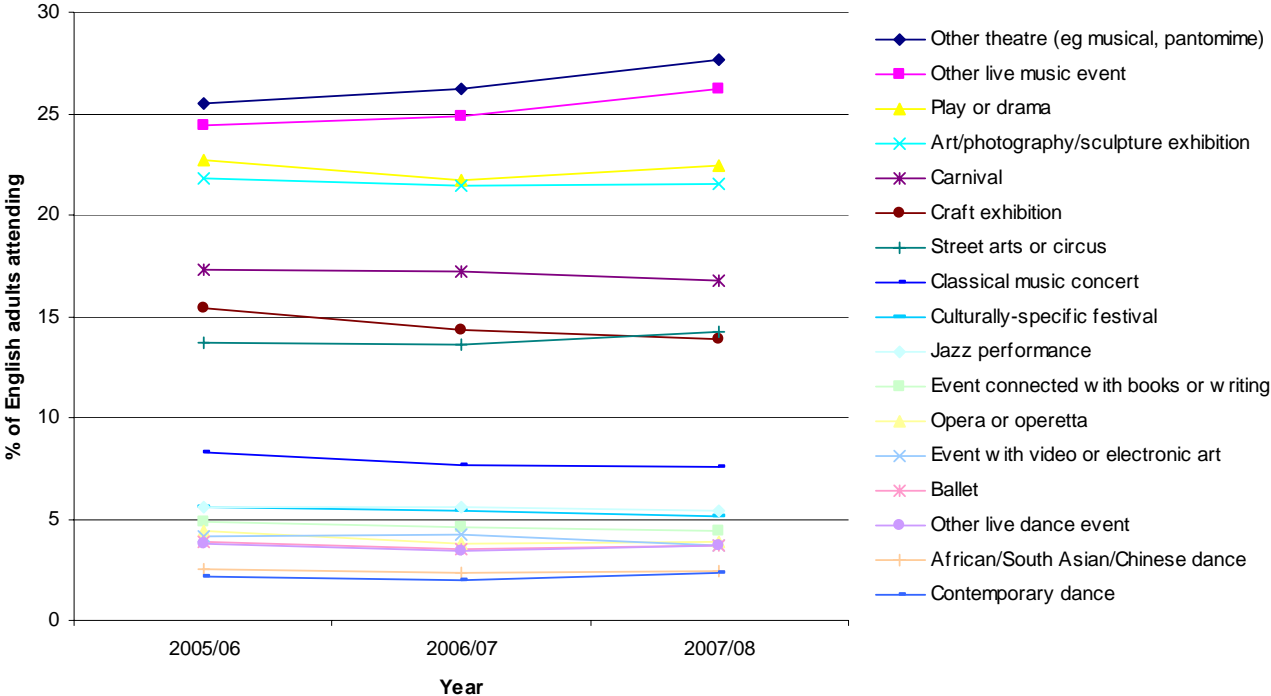
3.1 Arts attendance

The Taking Part survey asks whether people have attended 17 different categories of arts events. The proportion of people attending at least one of these events has been stable at around 67% of the population over the period 2005/06–2007/8.

However, when we look beyond the headlines we find that there were both positive and negative changes in levels of attendance at a number of individual arts events over the period 2005/06 to 2007/08. (Figure 1; see Appendix 1, Table 1 for detailed figures).

² All the figures discussed in this section are provided in full along with confidence intervals in Appendix 1, Tables 1–3.

Figure 1: Attendance at arts events, 2005/06 – 2007/08



There are two events where attendance increased consistently over the period from 2005/06 to 2007/08: other theatre performances such as musicals and pantomime (from 25.5% to 27.7%), and live music events other than classical or jazz (from 24.4% to 26.2%). These are the two most popular art events as measured by the Taking Part survey, and are clearly on track to keep their positions at the top.

At the same time, craft exhibitions experienced a gradual decline in attendance from 15.4% in 2005/06 to 13.9% in 2007/08. Attendance at classical music performances fell gradually from 8.3% to 7.6%. There were small year-on-year declines in attendance at events related to books or writing and culturally specific festivals such as Mela and Baisakhi. There were also small overall drops in attendance at opera and video or electronic art events.

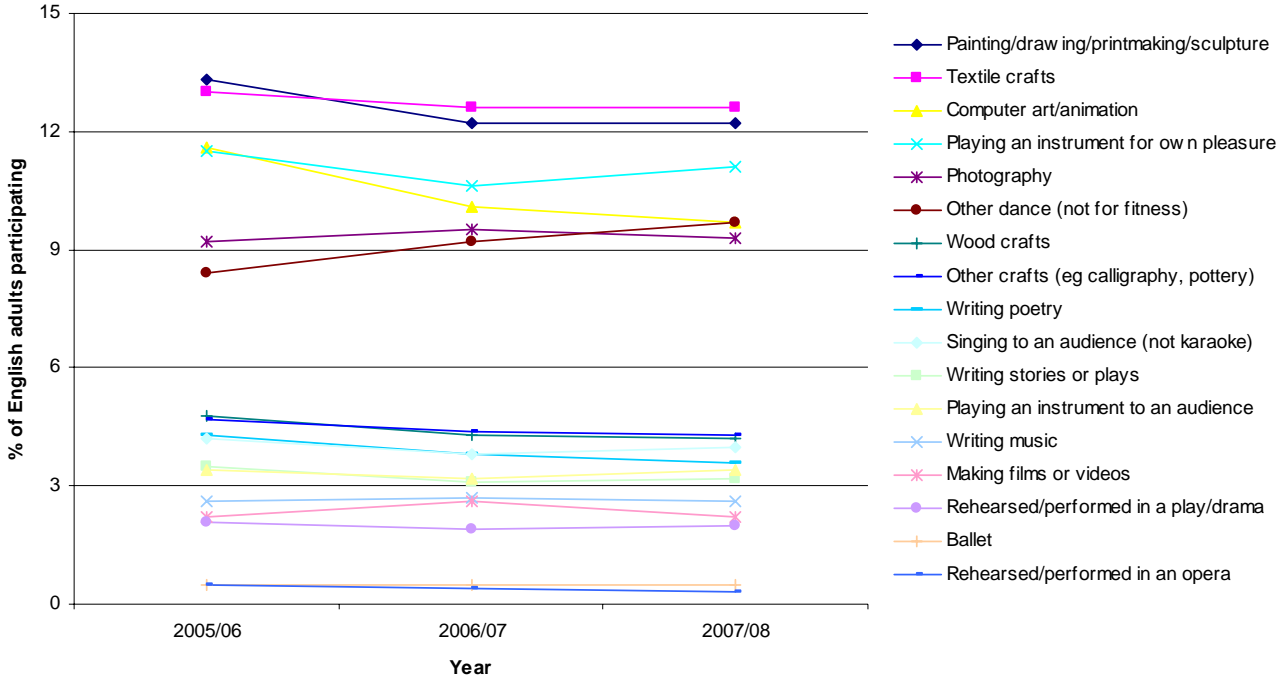
These upward and downward changes in attendance at individual arts events cancelled each other out to maintain a constant overall level of attendance.

For the remaining arts events, including all dance events, outdoor events (carnival, street arts or circus) and art exhibitions, attendance remained stable over this period.

3.2 Arts participation

Taking Part asks people whether they have participated in 17 different arts activities in the past 12 months. The overall participation rate remained stable at around 47% of the population over 2005/06 to 2007/08. However, as with attendance, there were some changes in levels of participation in individual activities (Figure 2; see Appendix 1, Table 2 for detailed figures).

Figure 2: Participation in arts activities, 2005/06 – 2007/08



The only arts activity where participation increased significantly was dance (other than ballet): the proportion of people dancing increased steadily from 8.4% in 2005/06 to 9.7% in 2007/08.

However, there were declines in participation in a number of visual arts and crafts activities. Participation in painting and drawing fell from 13.3% to 12.2%; the proportion of people creating original artworks or animation using a computer fell from 11.6% to 9.7%; and participation in wood crafts fell from 4.8% to 4.2%. There were also drops in opera participation and in writing poetry.

Participation in the remaining activities including all musical activities, ballet, photography, textile crafts and writing stories remained steady.

3.3 Other cultural engagement

Finally, Taking Part also asks about people's engagement in a number of other cultural activities, and a small number of significant changes were observed over 2005/06 to 2007/08 (see Appendix 1, Table 3).

The proportion of adults reading for pleasure increased from 62.8% to 64.2%. However, there was a decline in buying original artworks and in buying original/handmade crafts, which corresponds with the decreases in attendance at craft exhibitions and participation in wood crafts observed earlier.

There were no significant changes in the levels of volunteering in the arts over 2005/06 to 2007/08 (around 1.5% of the adult population) and cinema attendance remained steady at around 52%.

4 Demographic patterns of attendance and participation

Previously we have conducted a lot of analysis to better understand the demographic factors that affect arts engagement. We have reported on key inequalities in engagement levels by demographic group, as well as conducted in-depth analysis to examine the relative importance of different variables in predicting levels of arts engagement. We have found education to be the strongest and most consistent predictor of arts engagement; we have also found that in many cases social status, income, ethnic group, gender, age, level of general health and the region a person lives in, have a significant impact on an individual's chances of being an active arts engager³.

These inequalities reflect and perpetuate longstanding social norms and patterns of stratification and exclusion in society, and the Arts Council, arts organisations, local authorities and a range of other bodies are working to address them. It is therefore helpful to understand whether there have been any changes in levels of arts engagement among key sub-groups in the population over 2005/06 to 2007/08.

³ See pp. 40-61 of *From indifference to enthusiasm: patterns of arts attendance in England* by Catherine Bunting, Tak Wing Chan, John Goldthorpe, Emily Keaney and Anni Oskala (Arts Council England, 2008) and the related artform briefings, available at www.artscouncil.org.uk/takingpart.

The most notable changes over the three-year period are in regional engagement levels. There is one region where engagement appears to have been on the rise in the years to 2007/08: the North West. Attendance increased significantly in the North West between 2006/07 and 2007/08, from 61.9% to 65.6%, and participation from 41.1% to 44.7%. Over the period from 2005/06 to 2007/08, however, participation declined in both the North East and in London.

Otherwise there were very few discernible changes in levels of arts attendance among key sub-groups in the population, and the demographic profile of arts engagement has remained largely consistent over the three-year period.

5 Conclusions

Our analysis suggests that there has been little change in arts attendance and participation over the last few years. Overall attendance and participation rates have remained stable, and the demographic profile of arts audiences and participants was largely the same in 2007/08 as it was in 2005/06. However, the exceptions to this steady picture provide some interesting insights into whether and how it is possible to make a difference to the ways in which people in England engage with the arts.

The only arts events where attendance increased between 2005/06 and 2007/08 are relatively informal, sociable types of events – musicals, pantomime, rock and pop concerts. There seems to be an increasing appetite for experiences that offer something creative, enriching, perhaps inspirational, but in a relaxed and accessible setting. A real focus on the audience experience may enable other kinds of arts events to broaden their appeal.

The media – particularly broadcasters – have a role to play too. The significant increase in the proportion of people dancing may be due to the huge reach of TV shows such as *Strictly Come Dancing*, which has helped to popularise dance and make it more ‘top of mind’ as a leisure activity for a wider range of people. It will be interesting to see whether the increase in people participating in dance in turn leads to increased audiences for dance events.

The relatively large increase in both arts attendance and participation in the North West of England between 2006/07 and 2007/08 is likely to be related to the impact of Liverpool hosting the European Capital of Culture in 2008, with the lead-up and launch of the celebrations taking place during the fieldwork period of the 2007/08 dataset. This suggests that an intensive, city or region-wide focus on culture can

make a profound difference to the ways in which people think and feel about the arts and whether they choose to engage, although the pace of change may always be slow. The Taking Part survey will help to assess whether the North West region is successful in sustaining the impact of the Capital of Culture year now that the programme of focused activity has come to an end.

Overall, the picture of relative stability in arts engagement over the three year period is encouraging in that the majority of the population continues to engage with the arts in some way and there is little evidence here that the core audience for the arts is in decline. However, it also reinforces the scale of the challenge for organisations like the Arts Council seeking to increase engagement with the arts, particularly if we are to make a dent in the deep-seated inequalities related to education and class. The experience in the North West suggests that through sustained, collaborative, focused action, the arts sector can make an important difference in the long-term.

[Finding out more](#)

Visit our Taking Part website, www.artscouncil.org.uk/takingpart, to access all recent publications and more information on the Taking Part survey.

You can also email us at takingpart@artscouncil.org.uk if you have any questions or suggestions for further study.

Appendix 1: Arts engagement statistics from the Taking Part survey, 2005/06 – 2007/08

Table 1	Proportion of English adults attending arts events in the past 12 months, 2005/06 – 2007/08
Table 2	Proportion of English adults participating in arts activities in the past 12 months, 2005/06 – 2007/08
Table 3	Other cultural engagement by English adults, 2005/06 – 2007/08
Table 4	Attendance in at least one arts event by demographic subgroup, 2005/06 – 2007/08
Table 5	Participation in at least one arts activity by demographic subgroup, 2005/06 – 2007/08

Table 1: Proportion of English adults attending arts events in the past 12 months, 2005/06 – 2007/08

	2005/06		2006/07			2007/08			Change over 05/06 – 07/08
	%	Range	%	Range	Change since 05/06	%	Range	Change since 06/07	
Art/photography/sculpture exhibition	21.8	+/- 0.6	21.4	+/- 0.7		21.5	+/- 0.7		
Craft exhibition	15.4	+/- 0.6	14.3	+/- 0.6	–	13.9	+/- 0.6		–
Event with video or electronic art	4.1	+/- 0.3	4.2	+/- 0.3		3.7	+/- 0.3	–	–
Event connected with books or writing	4.9	+/- 0.3	4.6	+/- 0.3		4.4	+/- 0.3		–
Street arts or circus (not animals)	13.7	+/- 0.5	13.6	+/- 0.6		14.2	+/- 0.6		
Carnival	17.3	+/- 0.5	17.2	+/- 0.6		16.8	+/- 0.6		
Culturally-specific festival, eg Mela	5.6	+/- 0.3	5.4	+/- 0.4		5.1	+/- 0.4		–
Play or drama	22.7	+/- 0.6	21.7	+/- 0.7	–	22.4	+/- 0.7		
Other theatre, eg musical/pantomime	25.5	+/- 0.6	26.2	+/- 0.7		27.7	+/- 0.7	+	+
Opera or operetta	4.4	+/- 0.3	3.8	+/- 0.3	–	3.9	+/- 0.3		–
Classical music concert	8.3	+/- 0.4	7.7	+/- 0.4	–	7.6	+/- 0.4		–
Jazz performance	5.6	+/- 0.4	5.6	+/- 0.4		5.4	+/- 0.4		
Other live music event	24.4	+/- 0.7	24.9	+/- 0.7		26.2	+/- 0.7	+	+
Ballet	3.9	+/- 0.3	3.5	+/- 0.3		3.7	+/- 0.3		
Contemporary dance	2.2	+/- 0.2	2.0	+/- 0.2		2.3	+/- 0.3		
African/South Asian/Chinese dance	2.5	+/- 0.2	2.3	+/- 0.3		2.4	+/- 0.3		
Other live dance event	3.8	+/- 0.3	3.4	+/- 0.3		3.7	+/- 0.3		
Any of the above	66.5	+/- 0.7	66.4	+/- 0.8		67.4	+/- 0.7		
<i>Sample size</i>	28,117		24,174			25,720			

+ = statistically significant increase

– = statistically significant decrease

blank = no change

Table 2: Proportion of English adults participating in arts activities in the past 12 months, 2005/06 – 2007/08

	2005/06		2006/07			2007/08			Change over 05/06 – 07/08
	%	Range	%	Range	Change since 05/06	%	Range	Change since 06/07	
Ballet	0.5	+/- 0.1	0.5	+/- 0.1		0.5	+/- 0.1		
Other dance (not for fitness)	8.4	+/- 0.4	9.2	+/- 0.5	+	9.7	+/- 0.4		+
Singing to an audience (not karaoke)	4.2	+/- 0.3	3.8	+/- 0.3		4.0	+/- 0.3		
Playing an instrument to an audience	3.4	+/- 0.3	3.2	+/- 0.3		3.4	+/- 0.3		
Playing an instrument for pleasure	11.5	+/- 0.5	10.6	+/- 0.5	-	11.1	+/- 0.5		
Writing music	2.6	+/- 0.2	2.7	+/- 0.3		2.6	+/- 0.2		
Rehearsed/performed in play/drama	2.1	+/- 0.2	1.9	+/- 0.2		2.0	+/- 0.2		
Rehearsed/performed in opera	0.5	+/- 0.1	0.4	+/- 0.1		0.3	+/- 0.1		-
Painting/drawing/sculpture etc	13.3	+/- 0.5	12.2	+/- 0.5	-	12.2	+/- 0.5		-
Photography	9.2	+/- 0.4	9.5	+/- 0.5		9.3	+/- 0.4		
Making films or videos	2.2	+/- 0.3	2.6	+/- 0.3	+	2.2	+/- 0.2	-	
Computer art/animation	11.6	+/- 0.5	10.1	+/- 0.5	-	9.7	+/- 0.4		-
Textile crafts	13.0	+/- 0.5	12.6	+/- 0.6		12.6	+/- 0.5		
Wood crafts	4.8	+/- 0.3	4.3	+/- 0.3	-	4.2	+/- 0.3		-
Other crafts (eg calligraphy, pottery)	4.7	+/- 0.3	4.4	+/- 0.3		4.3	+/- 0.3		
Writing stories or plays	3.5	+/- 0.3	3.1	+/- 0.3	-	3.2	+/- 0.3		
Writing poetry	4.3	+/- 0.3	3.8	+/- 0.3	-	3.6	+/- 0.3		-
Any of the above	47.9	+/- 0.7	46.9	+/- 0.8		47.1	+/- 0.7		
<i>Sample size</i>	28,117		24,174			25,720			

+ = statistically significant increase

- = statistically significant decrease

blank = no change

Table 3: Other cultural engagement by English adults in the past 12 months, 2005/06 – 2007/08

	2005/06		2006/07			2007/08			Change over 05/06 – 07/08
	%	Range	%	Range	Change since 05/06	%	Range	Change since 06/07	
Going to see a film at a cinema or other venue	52.3	+/- 0.7	51.9	+/- 0.8		51.7	+/- 0.7		
Buying original works of art for yourself	7.3	+/- 0.4	6.6	+/- 0.4	–	6.7	+/- 0.4		–
Buying original/handmade crafts for yourself	16.0	+/- 0.5	14.9	+/- 0.6	–	14.4	+/- 0.5		–
Reading for pleasure (not newspapers, magazines, comics)	62.8	+/- 0.7	63.2	+/- 0.8		64.2	+/- 0.7		+
Buying a novel or book of stories, poetry or plays for yourself	44.9	+/- 0.7	43.8	+/- 0.8	–	44.0	+/- 0.7		
Volunteering	24.1	+/- 0.6	23.9	+/- 0.7		24.0	+/- 0.6		
Volunteering related to the arts	1.5	+/- 0.2	1.4	+/- 0.2		1.7	+/- 0.2	+	
<i>Sample size</i>	28,117		24,174			25,720			

+ = statistically significant increase

– = statistically significant decrease

blank = no change

Table 4: Attendance in at least one arts event by demographic subgroup, 2005/06 – 2007/08

	2005/06		2006/07			2007/08			Change over 05/06 – 07/08
	%	Range	%	Range	Change since 05/06	%	Range	Change since 06/07	
Gender									
Men	64.5	+/- 1.0	64.9	+/- 1.2		65.1	+/- 1.1		
Women	68.4	+/- 0.9	67.9	+/- 1.0		69.6	+/- 0.9	+	
Age									
16–24	66.0	+/- 2.2	65.7	+/- 2.5		65.8	+/- 2.3		
25–44	70.6	+/- 1.1	70.7	+/- 1.3		71.3	+/- 1.1		
45–64	70.4	+/- 1.2	70.6	+/- 1.4		72.0	+/- 1.2		
65–74	60.8	+/- 2.0	61.6	+/- 2.3		63.4	+/- 2.0		
75+	44.5	+/- 2.2	43.7	+/- 2.5		45.4	+/- 2.2		
Disability status									
No limiting disability/illness/infirmity	69.9	+/- 0.8	69.6	+/- 0.9		70.9	+/- 0.8	+	
Limiting disability, illness or infirmity	54.2	+/- 1.5	54.3	+/- 1.7		53.7	+/- 1.5		
Government region									
North East	59.2	+/- 2.4	60.7	+/- 2.7		57.0	+/- 2.4	-	
North West	61.3	+/- 2.0	61.9	+/-2.4		65.6	+/- 2.1	+	+
Yorkshire & Humber	60.8	+/- 2.1	61.2	+/- 2.5		61.4	+/- 2.2		
East Midlands	65.3	+/- 2.2	66.2	+/- 2.5		66.3	+/- 2.2		
West Midlands	64.0	+/- 2.0	63.1	+/- 2.5		64.7	+/- 2.1		
East of England	69.4	+/- 2.1	72.1	+/- 2.3		69.2	+/- 2.1		
London	66.0	+/- 1.9	63.3	+/- 2.1		66.6	+/- 2.0	+	
South East	73.1	+/- 1.8	72.8	+/- 2.1		74.8	+/- 1.8		
South West	73.5	+/- 1.9	72.2	+/- 2.3		72.3	+/- 1.9		

Overall sample size

28,117

24,174

25,720

+ = statistically significant increase

- = statistically significant decrease

blank = no change

Table 4 cont'd: Attendance in at least one arts event by demographic subgroup, 2005/06 – 2007/08

	2005/06		2006/07			2007/08			Change over 05/06 – 07/08
	%	Range	%	Range	Change since 05/06	%	Range	Change since 06/07	
Ethnic group									
White	67.4	+/- 0.8	67.5	+/- 0.8		68.1	+/- 0.7		
Black or minority ethnic	58.8	+/- 1.9	56.8	+/- 2.4		61.3	+/- 2.2	+	
Socio-economic group (NS-SEC)									
Higher socio-economic groups	76.6	+/- 0.9	76.7	+/- 1.0		76.7	+/- 0.9		
Lower socio-economic groups	52.4	+/- 1.1	51.9	+/- 1.3		53.8	+/- 1.1	+	
Highest qualification									
Degree	85.7	+/- 1.1	85.4	+/- 1.3		85.3	+/- 1.1		
Other higher education below degree	77.6	+/- 1.9	78.7	+/- 2.2		77.9	+/- 2.0		
A-levels	73.9	+/- 1.7	73.8	+/- 2.0		74.5	+/- 1.7		
Trade apprenticeships	56.9	+/- 3.4	60.9	+/- 4.1		58.7	+/- 3.6		
Below A-levels	66.8	+/- 1.5	64.7	+/- 1.8		65.5	+/- 1.6		
Other qualifications (level unknown)	60.2	+/- 3.5	55.3	+/- 4.1		54.0	+/- 3.7		-
No qualifications	43.8	+/- 1.3	44.1	+/- 1.6		45.5	+/- 1.4		
Personal income									
No income / no work or scheme	61.8	+/- 3.3	53.8	+/- 3.5	-	58.2	+/- 2.9		
Under £10,000	60.2	+/- 1.3	58.6	+/- 1.5		59.9	+/- 1.4		
£10,000 – £19,999	67.7	+/- 1.5	68.3	+/-1.7		67.0	+/- 1.5		
£20,000 – £29,999	76.7	+/- 1.8	77.0	+/-2.1		75.7	+/- 1.8		
£30,000 – £39,999	80.6	+/- 2.3	82.4	+/-2.6		82.8	+/- 2.2		
Over £40,000	79.3	+/- 2.2	80.2	+/- 2.5		82.4	+/- 2.0		+
<i>Overall sample size</i>	28,117		24,174			25,720			

+ = statistically significant increase

- = statistically significant decrease

blank = no change

Table 5: Participation in at least one arts activity by demographic subgroup, 2005/06 – 2007/08

	2005/06		2006/07			2007/08			Change over 05/06 – 07/08
	%	Range	%	Range	Change since 05/06	%	Range	Change since 06/07	
Gender									
Men	43.9	+/- 1.1	42.4	+/- 1.2		42.6	+/- 1.1		
Women	51.6	+/- 1.0	51.1	+/- 1.1		51.5	+/- 1.0		
Age									
16–24	56.7	+/- 2.2	57.9	+/- 2.6		56.3	+/- 2.4		
25–44	48.5	+/- 1.2	46.8	+/- 1.4		47.2	+/- 1.3		
45–64	47.7	+/- 1.3	46.2	+/- 1.5		46.2	+/- 1.3		
65–74	44.9	+/- 2.0	44.5	+/- 2.3		46.4	+/- 2.0		
75+	35.9	+/- 2.1	34.9	+/- 2.4		36.5	+/- 2.1		
Disability status									
No limiting disability/illness/infirmity	49.3	+/- 0.8	48.0	+/- 1.0	–	48.2	+/- 0.9		
Limiting disability/illness/infirmity	42.8	+/- 1.4	42.6	+/- 1.7		43.0	+/- 1.5		
Government region									
North East	43.3	+/- 2.4	42.6	+/- 2.8		38.6	+/- 2.4	–	–
North West	42.7	+/- 2.0	41.1	+/- 2.4		44.7	+/- 2.2	+	
Yorkshire & Humber	45.1	+/- 2.2	45.1	+/- 2.5		43.9	+/- 2.3		
East Midlands	48.1	+/- 2.3	47.3	+/- 2.6		49.0	+/- 2.4		
West Midlands	43.9	+/- 2.1	46.9	+/- 2.6		42.4	+/- 2.2	–	
East of England	48.9	+/- 2.2	50.2	+/- 2.6		50.5	+/- 2.2		
London	49.5	+/- 2.0	43.9	+/- 2.2	–	45.2	+/- 2.1		–
South East	52.2	+/- 2.0	51.8	+/- 2.3		52.4	+/-2.1		
South West	53.4	+/- 2.2	50.8	+/- 2.6		52.0	+/- 2.2		
<i>Overall sample size</i>	28,117		24,174			25,720			

+ = statistically significant increase

– = statistically significant decrease

blank = no change

Table 5 contd': Participation in at least one arts activity by demographic subgroup, 2005/06 – 2007/08

	2005/06		2006/07			2007/08			Change over 05/06 – 07/08
	%	Range	%	Range	Change since 05/06	%	Range	Change since 06/07	
Ethnic group									
White	48.4	+/- 0.8	47.4	+/- 0.9		47.6	+/- 0.8		
Black or minority ethnic	42.6	+/- 1.9	41.7	+/- 2.4		43.0	+/- 2.2		
Socio-economic group (NS-SEC)									
Higher socio-economic groups	53.3	+/- 1.0	52.0	+/- 1.1		52.0	+/- 1.0		
Lower socio-economic groups	37.9	+/- 1.1	36.9	+/- 1.2		37.5	+/- 1.1		
Highest qualification									
Degree	62.5	+/- 1.5	60.0	+/- 1.8	–	59.4	+/- 1.6		–
Other higher education below degree	57.7	+/- 2.3	55.4	+/- 2.7		57.2	+/- 2.4		
A-levels	54.2	+/- 1.9	52.9	+/- 2.2		52.2	+/- 2.0		
Trade apprenticeships	38.5	+/- 3.4	37.2	+/- 4.0		36.9	+/- 3.6		
Below A-levels	47.2	+/- 1.6	45.7	+/- 1.9		44.1	+/-1.6		–
Other qualifications (level unknown)	43.0	+/- 3.5	38.8	+/- 4.0		39.4	+/-3.6		
No qualifications	30.8	+/- 1.3	31.8	+/-1.5		32.7	+/-1.4		
Personal income									
No income / no work or scheme	54.1	+/- 3.3	48.1	+/- 3.5	–	48.0	+/- 2.9		–
Under £10,000	47.6	+/- 1.3	47.6	+/- 1.6		48.3	+/- 1.4		
£10,000 – £19,999	48.1	+/- 1.6	46.9	+/- 1.8		46.7	+/- 1.6		
£20,000 – £29,999	50.7	+/- 2.1	47.8	+/- 2.5		46.5	+/- 2.1		–
£30,000 – £39,999	51.1	+/- 2.9	48.4	+/- 3.4		48.9	+/- 2.9		
Over £40,000	50.2	+/- 2.7	48.7	+/- 3.1		50.4	+/- 2.7		
<i>Overall sample size</i>	28,117		24,174			25,720			

+ = statistically significant increase

– = statistically significant decrease

blank = no change

Appendix 2: Sample sizes of demographic subgroups, 2005/06 – 2007/08

	2005/06	2006/07	2007/08
Gender			
Men	12,549	10,671	11,205
Women	15,568	13,503	14,515
Age group			
16–24	2,859	2,401	2,491
25–44	10,167	8,574	8,958
45–64	8,558	7,506	8,009
65–74	3,558	3,033	3,396
75+	2,964	2,648	2,846
Disability status			
No long-standing disability, illness or infirmity	21,222	18,302	19,451
Long-standing disability, illness or infirmity	6,820	5,822	6,180
Government region			
North East	2,553	2,173	2,346
North West	3,407	2,845	2,980
Yorkshire & Humber	3,048	2,594	2,702
East Midlands	2,721	2,430	2,530
West Midlands	3,251	2,550	2,852
East of England	2,913	2,481	2,820
London	3,502	3,449	3,114
South East	3,660	3,101	3,351
South West	3,062	2,551	3,025
Ethnic group			
White	24,038	21,317	22,794
Black or minority ethnic	4,047	2,829	2,880

	2005/06	2006/07	2007/08
Socio-economic group (NS-SEC)			
Higher socio-economic group	14,129	12,700	13,595
Lower socio-economic group	11,861	10,080	10,706
Highest educational qualification			
Degree	5,776	5,194	5,665
Other higher education below degree	2,667	2,283	2,439
A-levels	3,869	3,309	3,639
Trade apprenticeships	1,191	967	1,041
Below A-levels	5,549	4,845	5,143
Other qualifications - level unknown	1,157	1,005	1,017
No qualifications	7,835	6,527	6,731
Personal income per annum			
No income / no work or scheme	1,286	1,367	1,629
Under £10,000	8,393	6,838	7,175
£10,000 – £19,999	5,944	5,121	5,497
£20,000 – £29,999	3,299	2,761	3,167
£30,000 – £39,999	1,685	1,468	1,675
Over £40,000	1,913	1,756	1,998

Arts Council England
14 Great Peter Street
London SW1P 3NQ
www.artscouncil.org.uk
Email: enquiries@artscouncil.org.uk
Phone: 0845 300 6200
Textphone: 020 7973 6564
Charity registration no 1036733

© Arts Council England, September 2009